

Below is the guide from the Singer 750 manual on how to wind a bobbin, but applies to any 700, or 600 series Touch & Sew*, with the lever inside the bobbin case area. Hope you find it helpful, and watch my site for additions on other information. Some free, and some for a fee.

Kind Regards,

WINDING THE BOBBIN

The push-button bobbin will make your sewing go faster than ever before — whether you are using a lot of one kind of thread or small quantities of different threads, as you are likely to do when mending or darning.

You will find a bobbin in place under the slide plate of your machine. (To open slide plate, simply slide it gently toward you.) If the bobbin runs out of thread while you are sewing, you can rewind it without removing it from the machine.

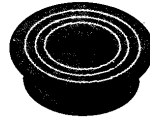
Preparation Steps

Make sure buttonhole dial is in **OFF** position.

1. Use general purpose, special purpose, or straight stitch presser foot.
2. Raise presser foot to release tension on thread, and raise the needle to its highest position. (Make sure your needle is larger than a size 9. See footnote on page 11.)
3. Open slide plate and make sure bobbin is empty. For removal of bobbin and thread, see page 9.
4. Set needle position and stitch width dials at straight stitch setting indicated by ▲ symbols.

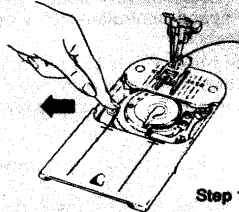
Winding Steps

1. Press bobbin push button to the left to engage it in winding position.
2. Wrap thread around presser foot screw, and hold end of thread firmly.
3. Start the machine.
 - Run the machine at a moderate speed.
 - Pull thread end away after a few coils have been wound.
 - Keep your eye on the bobbin as it fills. *Do not allow thread to wind beyond the outside FULL ring.*
4. Close slide plate to release push button to sewing position. Turn to the next page for instructions on starting to sew.

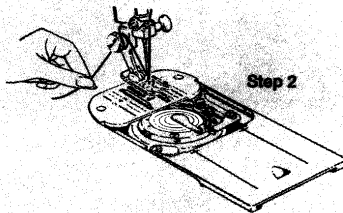


Bobbin

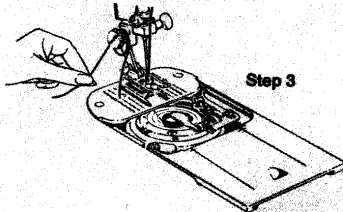
Winding Steps



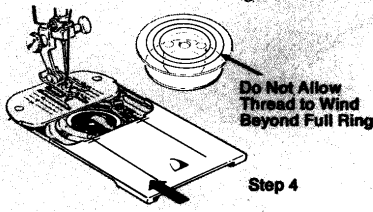
Step 1



Step 2



Step 3



Step 4

* A trade mark of The Singer Company

Sorry, the scans are a little dark, but should provide enough information to get you going. Again, this will apply to any 700, or 600 series machine.

changing the bobbin

REMOVING THE BOBBIN

Raise needle to its highest position.

1. Open slide plate; leave bobbin push button in sewing position.
2. Raise bobbin latch by inserting fingernail under end of latch at center of bobbin.
3. Insert fingernail under rim of bobbin immediately to right of latch and remove the bobbin.

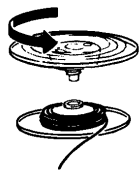
REPLACING AN EMPTY BOBBIN

1. Make sure bobbin halves are securely tightened.
2. With latch raised, slip bobbin (wide side up) into bobbin case. Then snap latch down to secure bobbin.
3. Leave the slide plate open until you have finished winding.

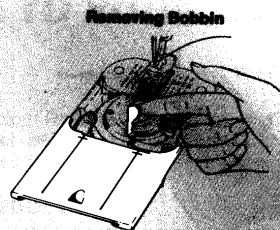
REMOVING THREAD FROM BOBBIN

If there is not much thread left on the bobbin, you do not need to remove bobbin from machine — simply pull the thread end through the throat plate.

If there is a lot of thread left and you do not wish to reserve it by setting aside the bobbin for future use, remove the bobbin, unscrew the two halves, and remove all the thread at once.

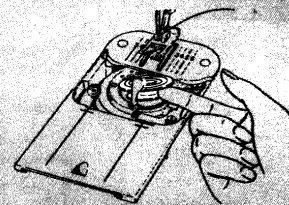


Removing Thread from Bobbin



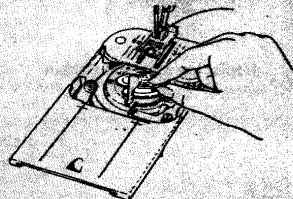
Removing Bobbin

Open Slide Plate and Raise Latch

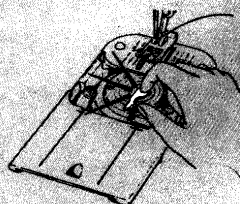


Lift Out Bobbin

Replacing Empty Bobbin



Slip Bobbin into Case



Snap Latch Down